

Global Bike

Curriculum: Introduction to S/4HANA using Global Bike

Teaching material - Information



Teaching material - Version

- 3.3 (Mai 2019)

- Software used
 - SAP S/4HANA 1809

- Model
 - Global Bike

- Prerequisites
 - No Prerequisites needed

Module Information



Authors

- Simha Magal
- Stefan Weidner
- Jeff Word



Target Audience

- Beginner

Module Information



Learning Objectives

At the completion of this module, you should be able to:

- Describe the story of the Global Bike Group
- Draw the organisational structures of the Global Bike Group
- Describe the essential characteristics of the products and business partners of the Global Bike Group.
- List the business processes of the Global Bike Group.

Agenda

- Global Bike Group
- Organizational Structure
- Products
- Business Partners
- Business Processes

Global Bike Group

- Background:
 - Global concern using full ERP capabilities
 - Consists of two companies located in the US and in Germany

- History:
 - **John Davis** won numerous mountain bike championships in the US
 - In 1990, started his own mountain bike company (Frankenstein Bikes)
 - **Peter Schwarz** grew up on road bikes in the Black Forest, Germany
 - As a student, he engineered ultra-light composite frames
 - In 1993, started his own bike frame company (Heidelberg Composites)
 - Both met in 2000
 - In 2001, merged to form Global Bike Inc.

Global Bike Group

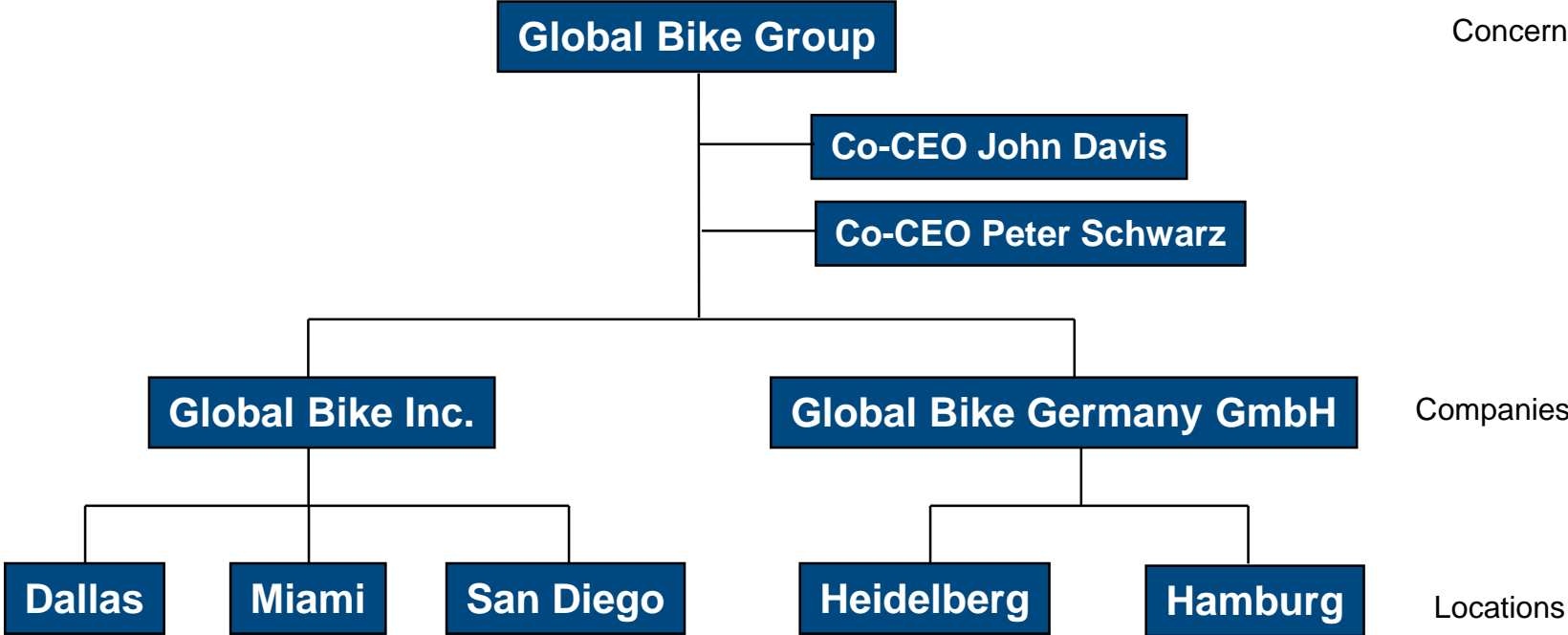
- Strategy:

- John and Peter are Co-CEOs
- John is responsible for (in terms of reporting)
 - Sales, Marketing, Service and Support, IT, Finance, and Human Resources
 - sells products and brings in money
- Peter is responsible for
 - Research, Design, Procurement, and Manufacturing Groups
 - builds products and spends money
- World-class bicycle company serving both the professional and “prosumer” in touring and off-road racing.
- Focus on:
 - Quality
 - Toughness
 - Performance

Agenda

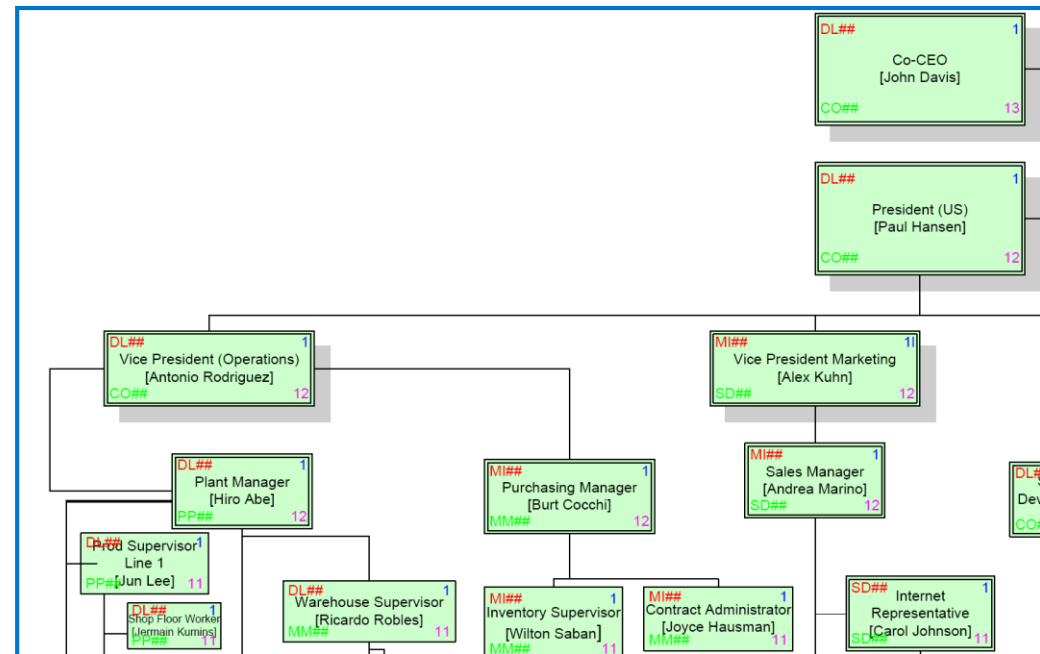
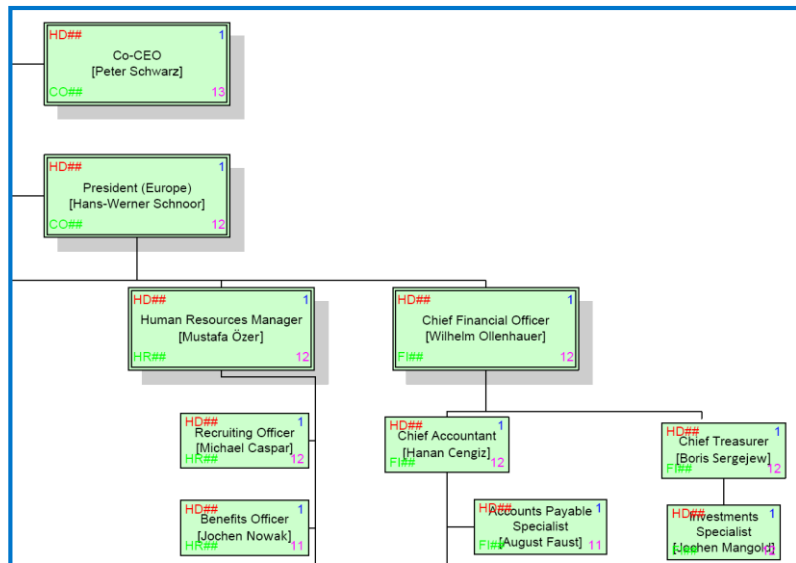
- Global Bike Group
- **Organizational Structure**
- Products
- Business Partners
- Business Processes

Organizational Structure (Overview)



Organizational Structure (Human Resources)

- Employees (US and Germany)



Agenda

- Global Bike Group
- Organizational Structure
- **Products**
- Business Partners
- Business Processes

Products

■ Trading Goods

- Accessories
 - Safety Gear
 - Other

AIR PUMP	EN	PUMP1000
ELBOW PADS	EN	EPAD1000
FIRST AID KIT	EN	FAID1000
KNEE PADS	EN	KPAD1000
OFF ROAD HELMET	EN	OHMT1000
REPAIR KIT	EN	RKIT1000
ROAD HELMET	EN	RHMT1000
T-SHIRT	EN	SHRT1000
WATER BOTTLE	EN	BOTL1000
WATER BOTTLE CAGE	EN	CAGE1000

■ Raw Materials

BRAKE KIT	EN	BRKT1000
CARBON COMPOSITE WHEEL	EN	CCWH1000
CHAIN	EN	CHAN1000
CIRCULATION FAN FILTER	EN	FLTR1000
DERAILLEUR GEAR ASSEMBLY	EN	DGAM1000
HEX NUT 5 MM	EN	HXNT1000
LOCK WASHER 5 MM	EN	LWSH1000
MEN'S OFF ROAD FRAME	EN	OFFR1000
OFF ROAD ALUMINUM WHEEL	EN	ORWH1000
OFF ROAD HANDLE BAR	EN	ORHB1000
OFF ROAD SEAT KIT	EN	ORSK1000
OFF ROAD TIRE	EN	ORTR1000
OFF ROAD TUBE	EN	ORTB1000
PACKAGING	EN	PCKG1000
PEDAL ASSEMBLY	EN	PEDL1000
SOCKET HEAD BOLT 5X20MM	EN	BOLT1000
TOURING ALUMINUM WHEEL	EN	TRWH1000
TOURING FRAME-BLACK	EN	TRFR1000
TOURING FRAME-RED	EN	TRFR3000
TOURING FRAME-SILVER	EN	TRFR2000
TOURING HANDLE BAR	EN	TRHB1000
TOURING SEAT KIT	EN	TRSK1000
TOURING TIRE	EN	TRTR1000
TOURING TUBE	EN	TRTB1000
WARRANTY DOCUMENT	EN	WDOC1000
WOMEN'S OFF ROAD FRAME	EN	OFFR2000

Products

■ Semi-Finished Goods

CARBON COMPOSITE WHEEL ASSEMBLY	EN	CCWA1000
OFF ROAD ALUMINUM WHEEL ASSEMBLY	EN	ORWA1000
TOURING ALUMINUM WHEEL ASSEMBLY	EN	TRWA1000

■ Finished Goods

- Touring Bikes (Deluxe, Professional) in three colors
- Off-Road Bikes (Men, Women)

DELUXE TOURING BIKE (BLACK)	EN	DXTR1000
DELUXE TOURING BIKE (RED)	EN	DXTR3000
DELUXE TOURING BIKE (SILVER)	EN	DXTR2000
MEN'S OFF ROAD BIKE	EN	ORMN1000
PROFESSIONAL TOURING BIKE (BLACK)	EN	PRTR1000
PROFESSIONAL TOURING BIKE (RED)	EN	PRTR3000
PROFESSIONAL TOURING BIKE (SILVER)	EN	PRTR2000
WOMEN'S OFF ROAD BIKE	EN	ORWN1000

Agenda

- Global Bike Group
- Organizational Structure
- Products
- **Business Partners**
- Business Processes

Business Partners

- Customers (US and Germany)

AIRPORT BIKES	000	12001
ALSTER CYCLING	000	13001
BAVARIA BIKES	000	14001
BEANTOWN BIKES	000	4001
BIG APPLE BIKES	000	1001
CAPITAL BIKES	000	15001
CRUISER BIKES	000	16001
DC BIKES	000	10001
DRAHTESEL	000	17001
FAHRPOTT	000	18001
FURNITURE CITY BIKES	000	6001
MOTOWN BIKES	000	7001
NECKARAD	000	19001
NORTHWEST BIKES	000	11001
OSTSEERAD	000	20001
PEACHTREE BIKES	000	3001
PHILLY BIKES	000	2001
RÄDLELAND	000	21001
RED LIGHT BIKES	000	22001
ROCKY MOUNTAIN BIKES	000	1
SILICON VALLEY BIKES	000	9001
SOCAL BIKES	000	8001
VELODOM	000	23001
WINDY CITY BIKES	000	5001

Vendors (US and Germany)

- Vendors (US and Germany)

ABS BRAKES GMBH	000	38001
BOOMTOWN TIRE & WHEEL	000	25001
BURGMEISTER ZUBEHÖR OHG	000	36001
COLOGNE BIKE SUPPLIES	000	45001
DALLAS BIKE BASICS	000	26001
FLAT TIRE AND MORE	000	39001
FUN N THE SUN SEATS N BARS	000	33001
GREEN BLAZERS SEATS	000	32001
GUMMI SCHULTZE	000	40001
LIGHTBULB ACCESSORY KITS	000	27001
LOHSE SCHRAUBE	000	41001
MAIN CARBON	000	43001
NIGHT RIDER ALUMINUM PRO...	000	29001
OLYMPIC PROTECTIVE GEAR	000	24001
PYRAMID BIKING	000	37001
RAPIDS NUTS N BOLTS	000	31001
REDWOOD KITS	000	35001
RUN & FUN	000	47001
SACHSEN STAHL AG	000	46001
SHELL GEAR	000	44001
SPACE BIKE COMPOSITES	000	28001
SPY GEAR	000	30001
SUNNY SIDE UP TIRE	000	34001
THICK SPOKE	000	42001

Agenda

- Global Bike Group
- Organizational Structure
- Products
- Business Partners
- **Business Processes**

Business Processes

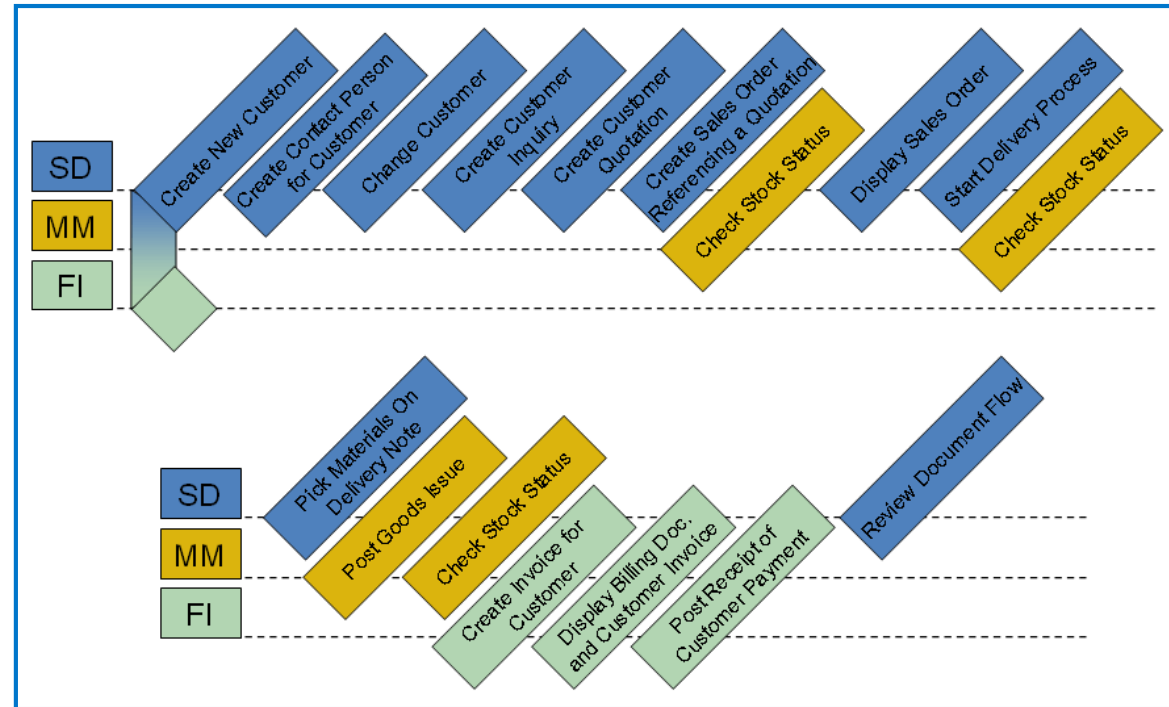
- Sell – Fulfillment
- Buy – Procurement
- Make – Production
- Track – Financial Accounting
- Track – Controlling
- People – Human Capital Management
- Store – Inventory and Warehouse Management
- Maintain – Enterprise Asset Management
- Service – Customer Service
- Project – Project Management

Cross-functional Integration



Process Integration (example)

- Order-to-Cash Process
 - Sales and Distribution (SD)
 - Materials Management (MM)
 - Financial Accounting (FI)



Process Integration (example)

- Procure-to-Cash Process
 - Materials Management (MM)
 - Financial Accounting (FI)

